



UX Case Study

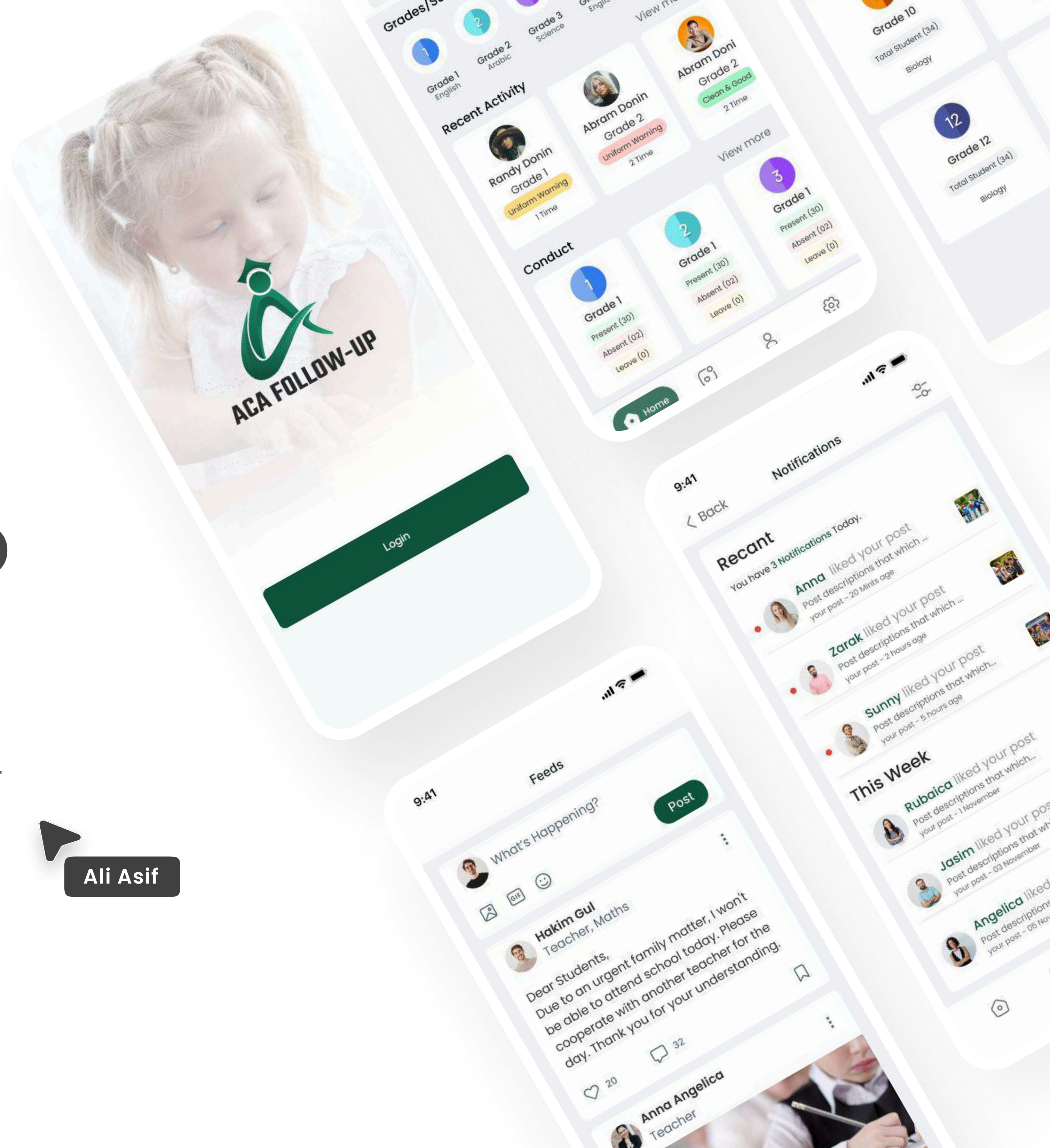
ACA-Follow Up

Designing a robust school management system integrating academic achievement, behavior monitoring, attendance tracking, and class feeds for improved student performance and operational efficiency.

Kamran Naveed

Ali Asif

Product By
 WHETSTONEZ





Problem Statement

Revolutionize school management with an innovative platform.
Streamline setup, communication, and tracking. Optimize operations
and empower student success.

Objectives & Goals

- Streamline administrative tasks related to student management, attendance tracking, and communication.
- Provide real-time monitoring of academic progress, behavior, and attendance.
- Foster a positive learning environment through effective behavior monitoring and management.
- Enhance communication between teachers, students, parents, and administrators.
- Improve student performance by facilitating personalized support and intervention strategies.
- Increase operational efficiency by centralizing data management and automating routine tasks.

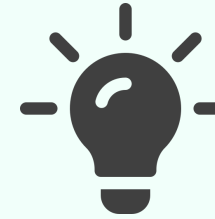
Our Process



Discover



Define



Ideate



Design

Business Challenges

- Integration Complexity: Ensuring seamless integration of multiple modules poses technical hurdles.
- Data Security and Privacy: Safeguarding sensitive student information requires robust security measures and compliance with regulations.
- Customization and Scalability: Meeting diverse institutional needs while maintaining scalability is challenging.
- Budget Constraints: Limited budgets may hinder investment in technology infrastructure and ongoing maintenance.
- Technical Support and Maintenance: Providing reliable support and addressing software issues promptly is crucial.
- User Experience and Engagement: Designing an intuitive interface for widespread user engagement is essential.



Product Users

The school management system serves administrators, teachers, students, parents, support staff, and IT personnel for efficient school operation and enhanced educational outcomes.



User Persona



Waqar Gill



45



Saudi Arabia



MBA



Employee



Solutions



The redesigned school management system will address Emily's pain points by offering the following features:

- Intuitive and user-friendly interface for easy access to subject allocation and student details.
- Streamlined processes for subject and section management, reducing time and potential errors.
- Enhanced attendance management with automated functions and real-time visibility.
- Improved communication features, enabling seamless collaboration with students, parents, and administrators.

Background

Emily is an experienced teacher who is passionate about providing quality education to her students. She teaches multiple subjects and is responsible for managing her assigned sections and students. Emily is proficient in using technology and believes that an effective school management system can greatly support her in delivering a seamless learning experience to her students.

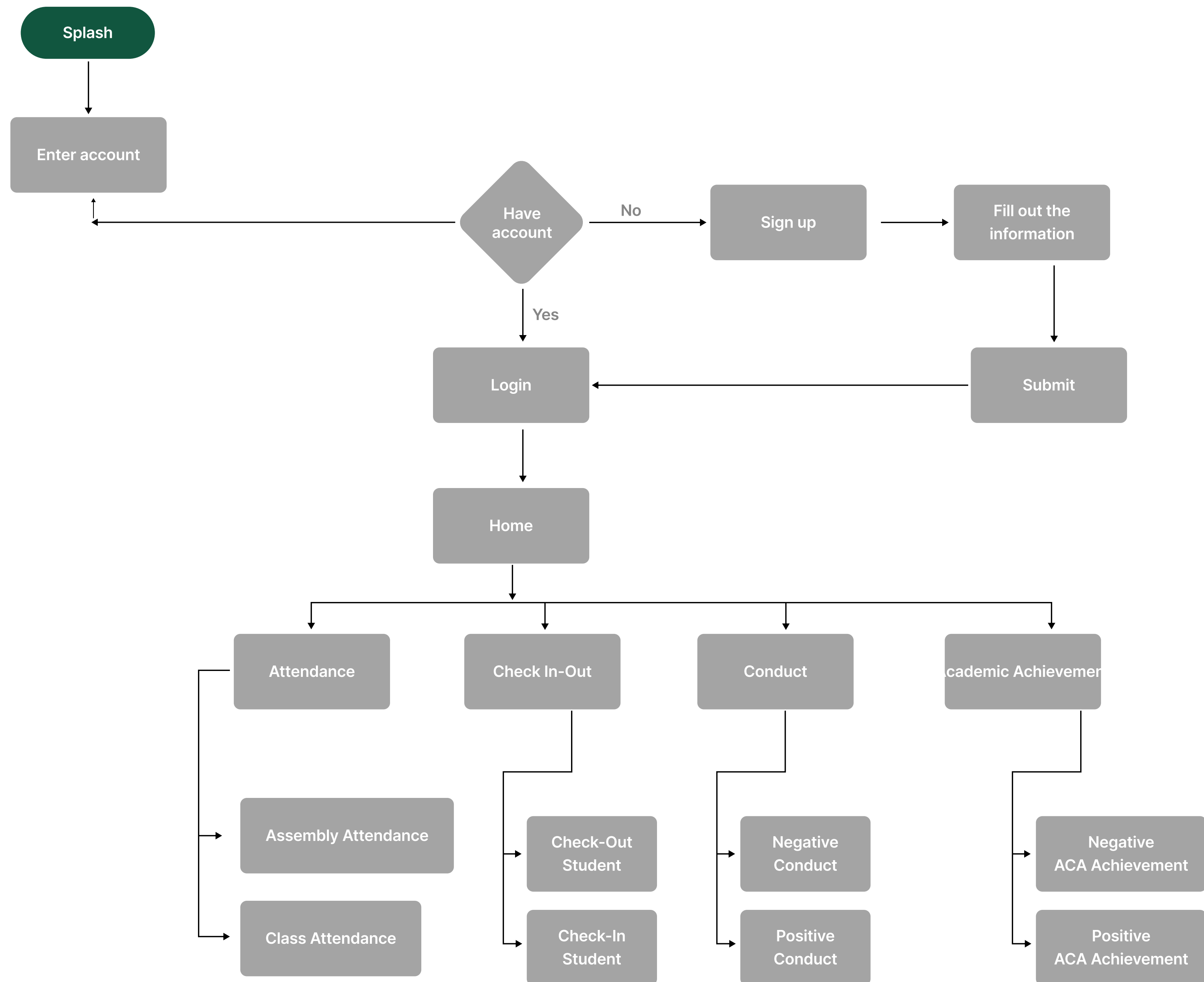
Goals and Needs

- Easily access and manage information related to her assigned sections, including subject allocation and student details.
- Track and evaluate student academic performance and behavior conduct.
- Efficiently manage attendance and keep accurate records.
- Collaborate and communicate effectively with students, parents, and administrators.

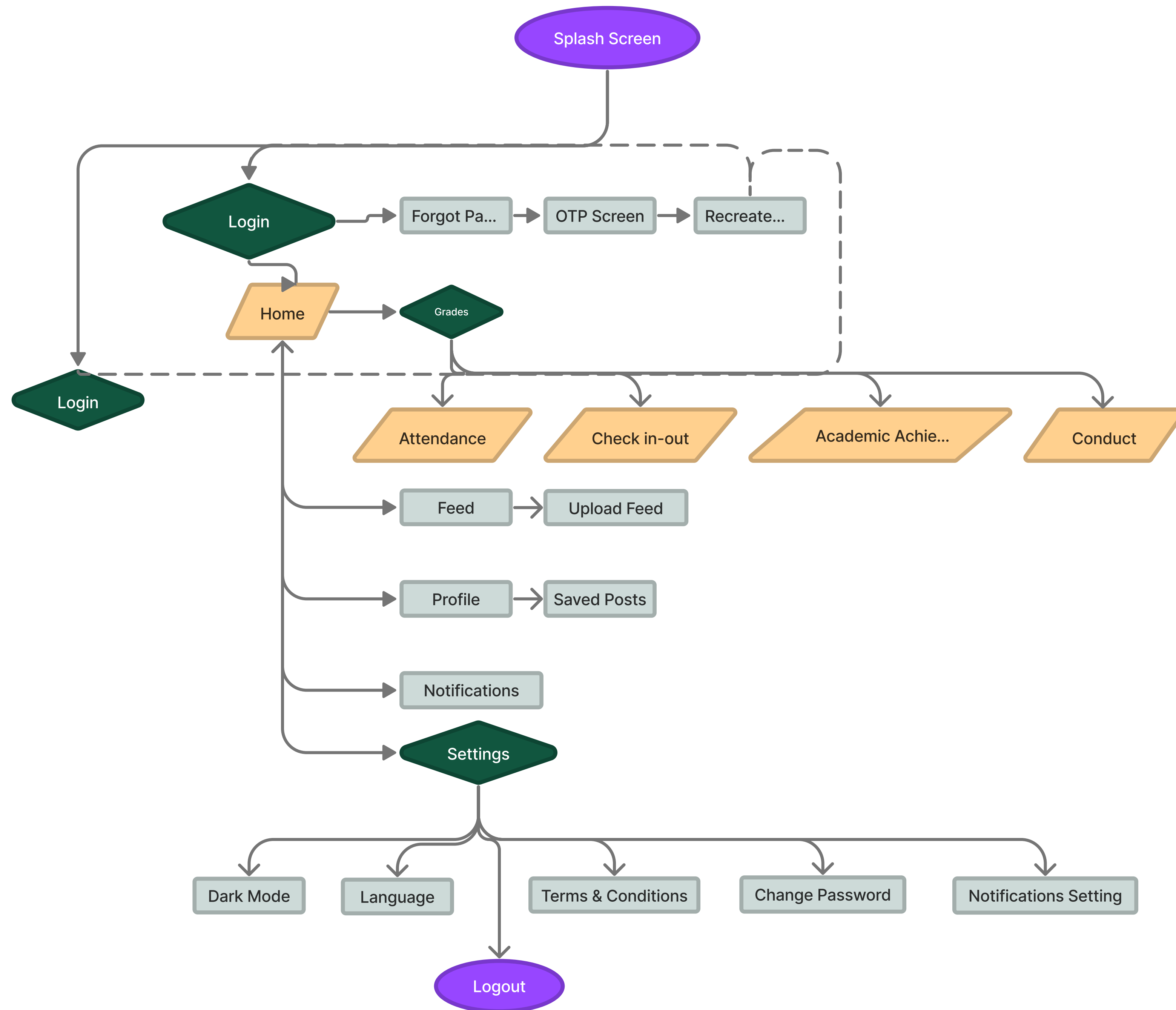
Pain points

- The current system's unintuitive interface frustrates Emily, hindering navigation.
- Manual subject and student management is error-prone and time-consuming.
- Attendance tracking is cumbersome and lacks visibility.
- Communication features are limited, impeding collaboration.

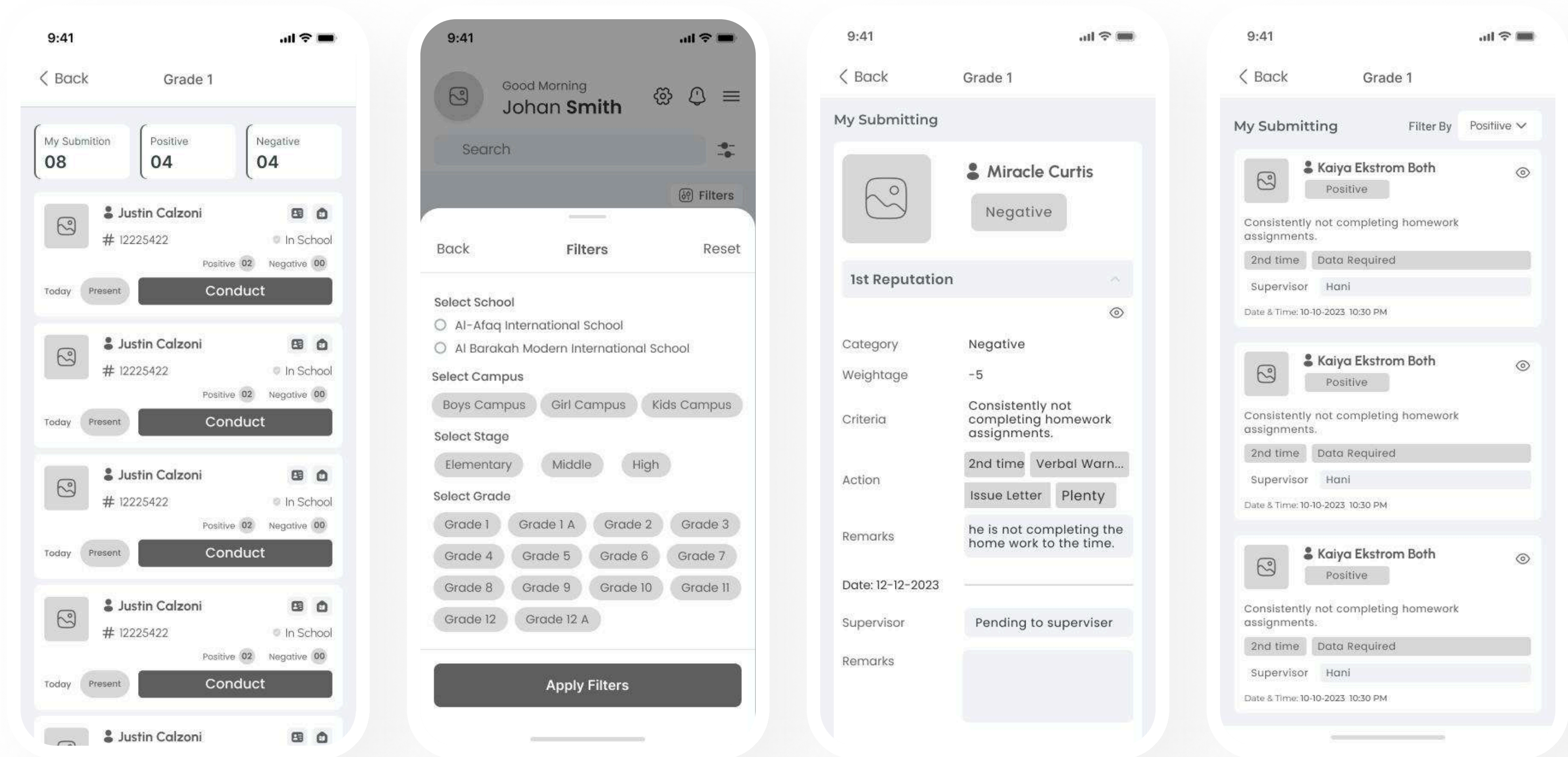
Information Architecture



User Flow



Wireframe



Color Palette

Your color choice decision

Style Guide

☒ Primary Color

115740

☐ Gray

F1F2F4

☒ Secondary

768E7B

☐ Black

000000

☐ Neutral

C8C7C6

☐ Negative

FF4405

Font Style

Montserrat

WhatTheFont is a simple & easy font finder that can help you identify fonts. Just upload an image of the font you need identified, and the tool will do.

Regular Medium **Semibold** Bold Extrabold

Font

Aa

Bb

Cc

Dd

Ee

Ff

Gg

Hh

ii

Jj

Kk

LI

Mm

Nn

Oo

Pp

Qq

Rr

Ss

Tt

Uu

Vv

Ww

Xx

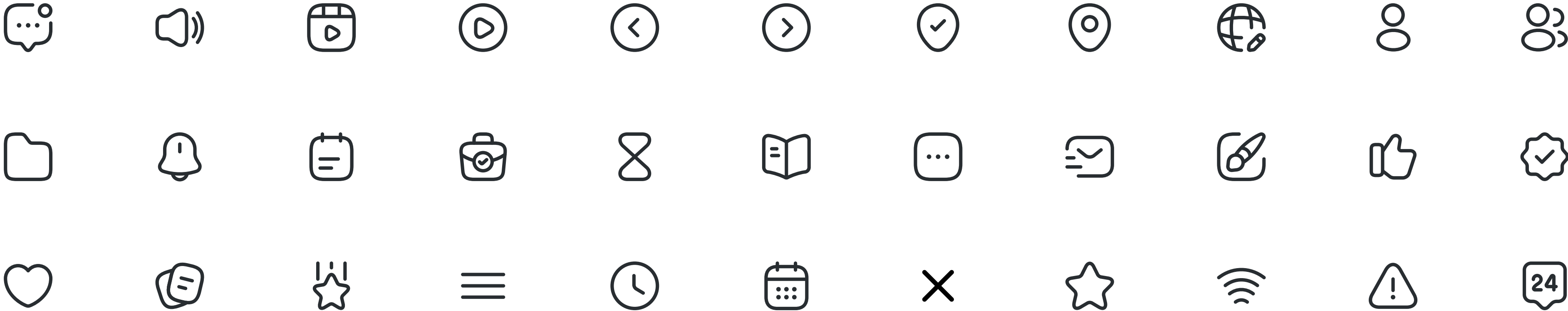
Yy

Zz

Style Guide

Iconography

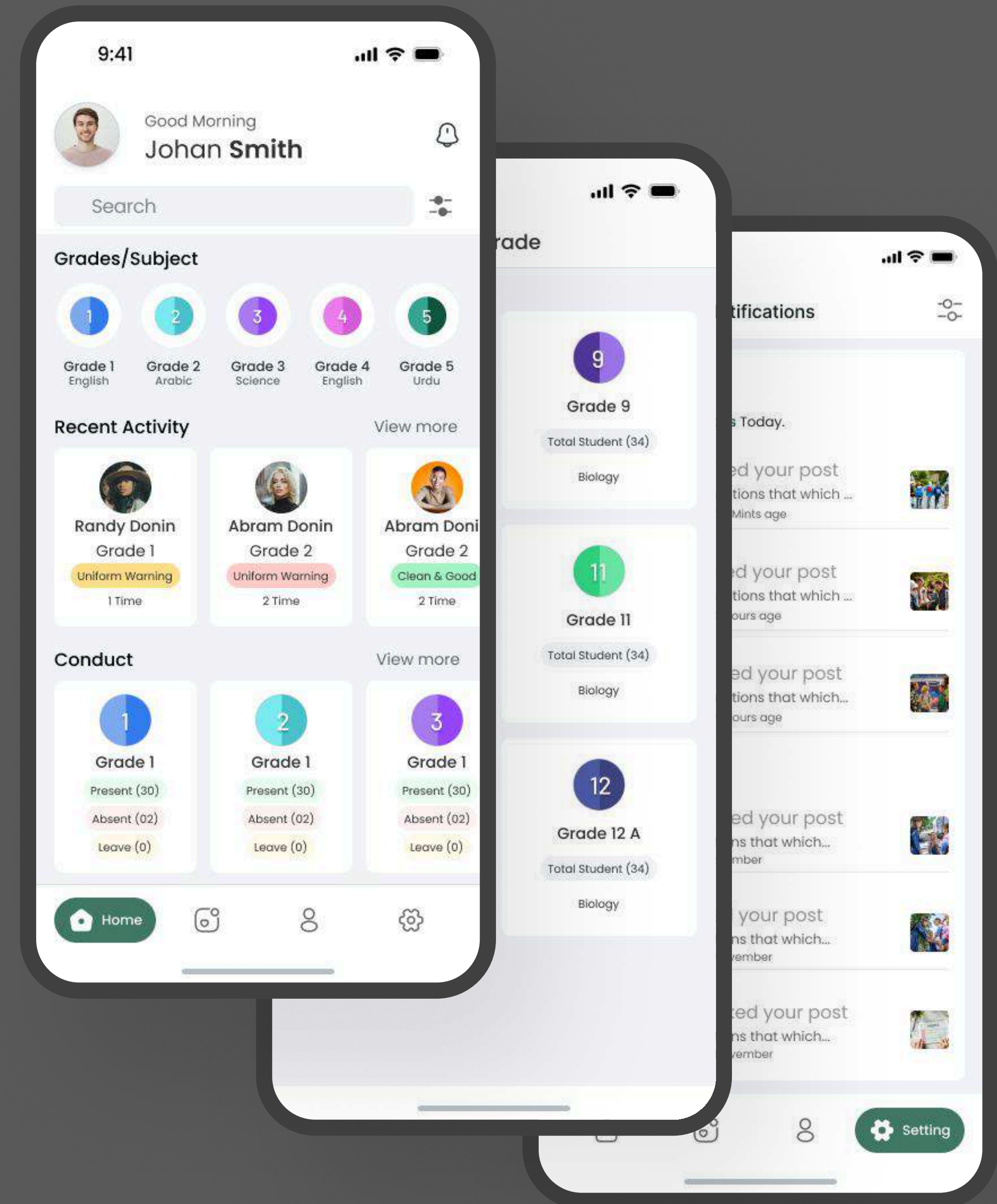
Iconography is the visual language of symbols and icons used to convey ideas, concepts, or actions in a simplified and universally recognizable manner.



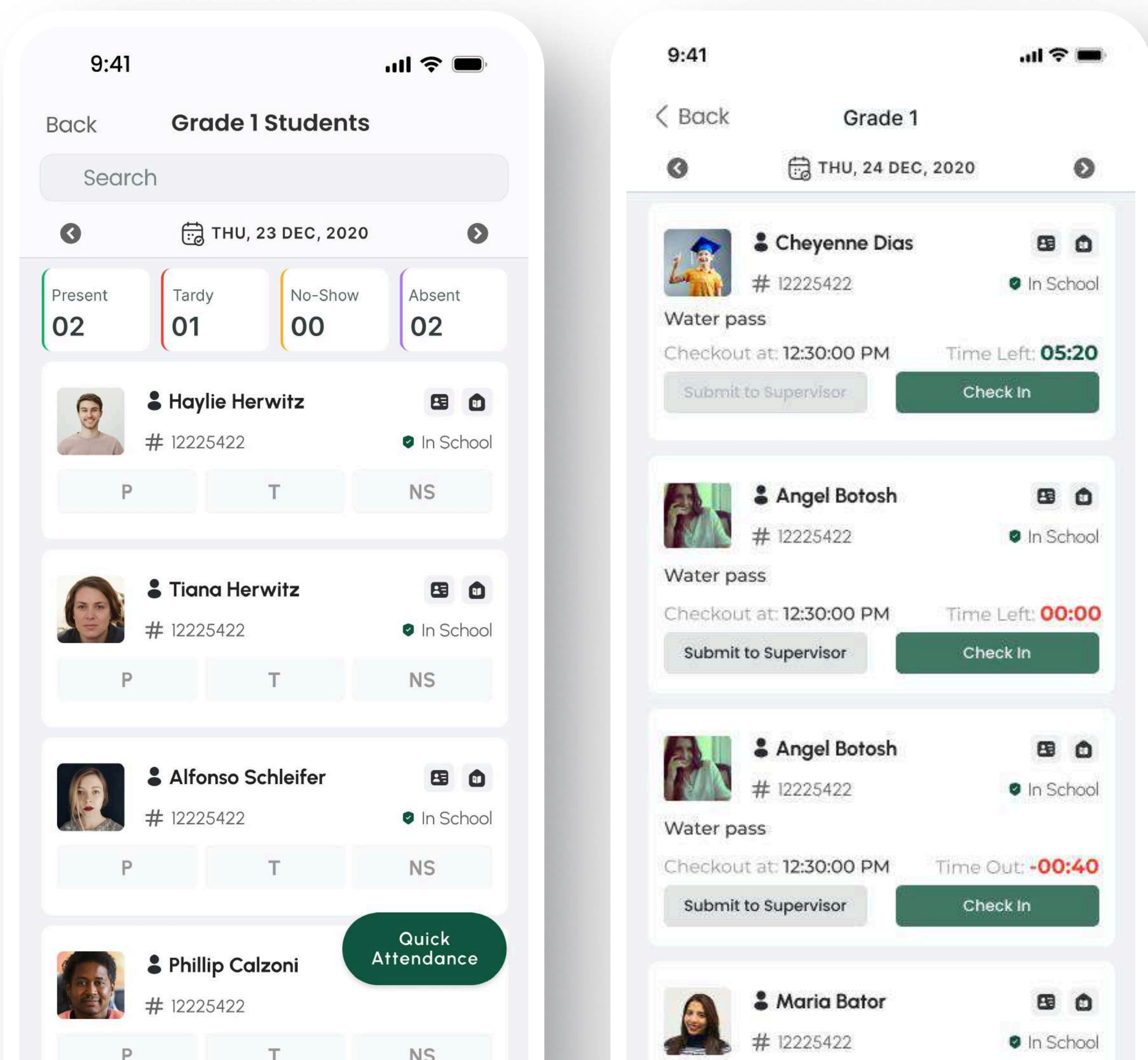
Home Screen

The home screen of the mobile app will feature a user-friendly interface with easy navigation, quick access to attendance, grades, and announcements, real-time notifications, student summary, recent activity, and direct communication channels for seamless interaction.

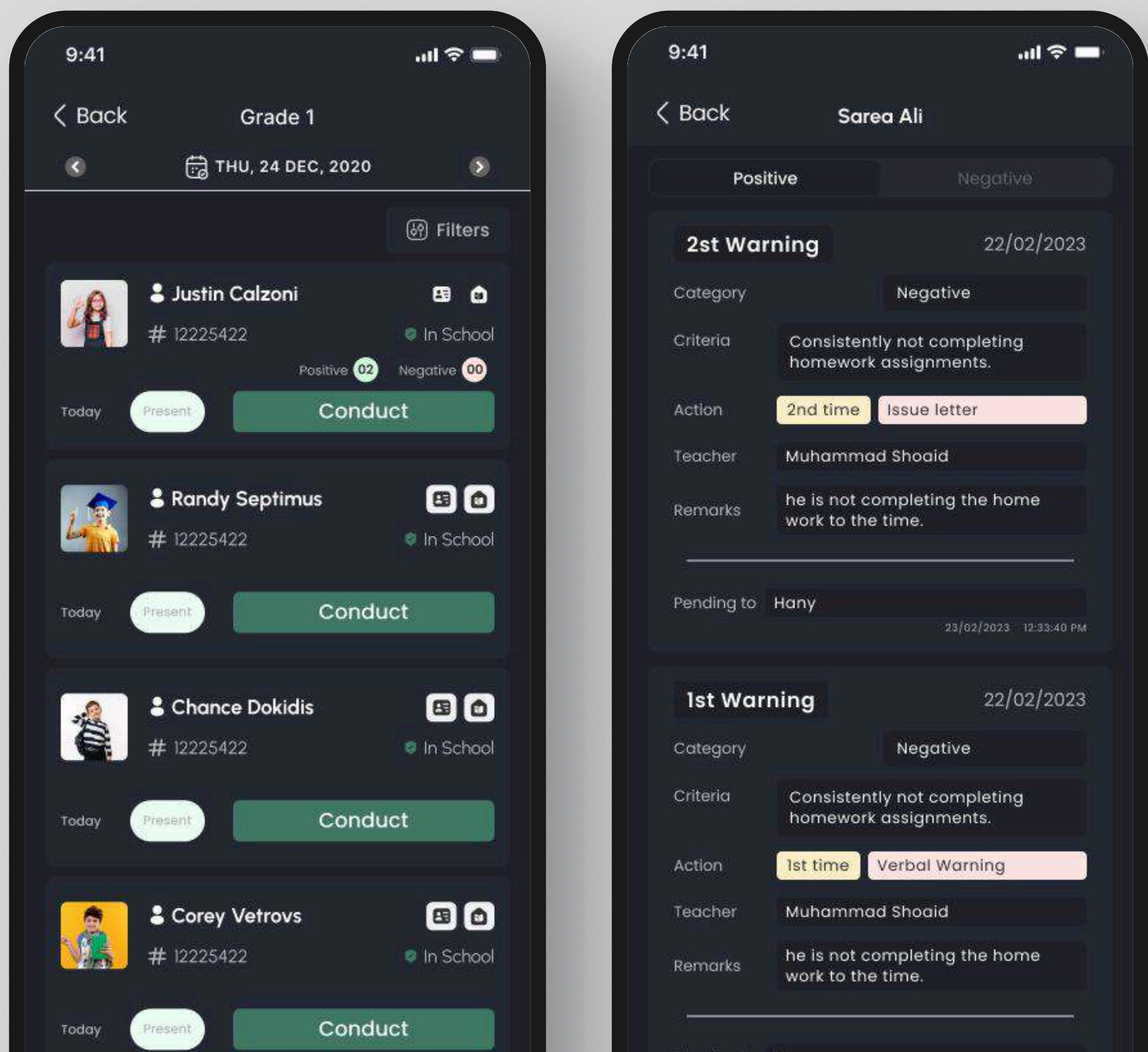
Hi-Fi Design



Light Mode



Dark Mode





**Thank You
For Watching**

